

Test Facilities available at Testing Laboratory

ELECTRICAL TESTING LABORATORY

- Lightning Impulse Voltage
- High Voltage (Dry/ Wet)
- Millivolt Drop
- Temperature Rise
- Heating Cycle for fittings
- Electrical Aging for IPC
- DC Resistance of Conductor
- Electromechanical & Mechanical load etc.
- Residual Strength of Insulators
- Wide test range for Composite Insulators
- Type tests of Ceramic/ Glass / Polymer Insulators, Bus Bars, HV Switch / Isolators, CT/PT, VCB Panels, Clamps & Connectors. Fittings, Insulation Piercing Connectors etc.

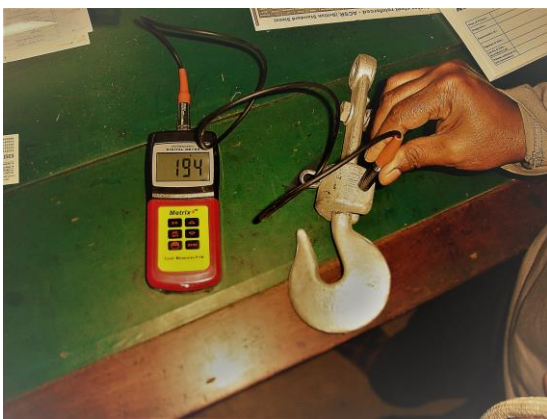
MECHANICAL TESTING LABORATORY

- Tensile & Compressive load
- Stress-Strain Analysis of Conductors
- Ultrasonic test
- Magnetic Particle
- Izod / Charpy Impact
- Type test of Earth Wires, AAC/ ACSR / AAAC Conductors / Hardware Fittings
- Stay/Barbed Wires
- Load Time test of composite Insulators
- Tube/Sheet/Strips/Rod
- Valves / Coupling/Hook
- Chain-pulley block/Rope etc.

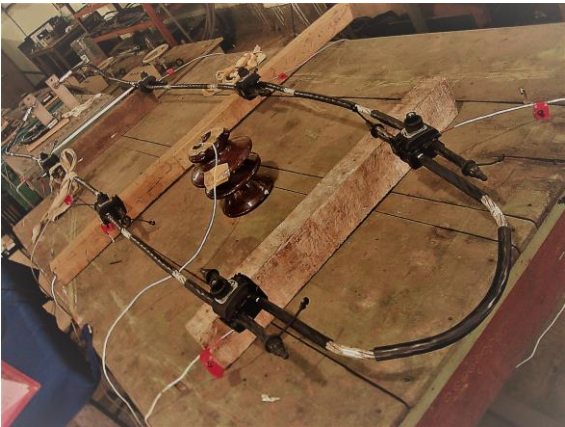
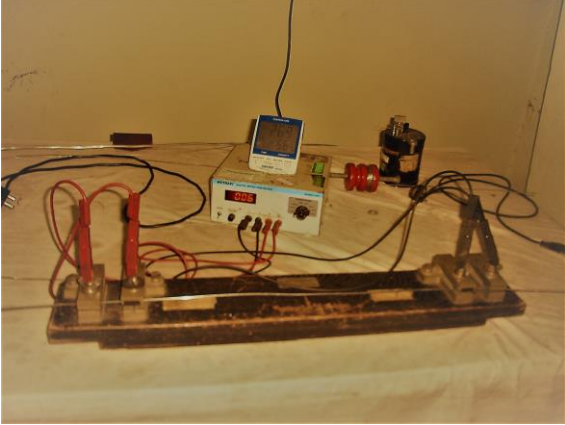
CHEMICAL TESTING LABORATORY

- Ferrous / non-ferrous composition (spectrometer method)
- Galvanizing (uniformity and mass of Zn Coating)

Testing Facilities Available as per IS/BS/IEC/ANSI etc.



GALVANIZING THICKNESS MEASUREMENT



DC RESISTANCE MEASUREMENT
TEMPERATURE RISE OF CONNECTORS

HV WET TEST



LIGHTNING IMPULSE VOLTAGE TEST