



एन एस आई सी
N S I C

NSIC TECHNICAL SERVICES CENTRE
The National Small Industries Corporation Ltd.
(A Government of India Enterprise)
Okhla Phase-III, (Near Govind Puri Metro Station)
New Delhi - 110020.

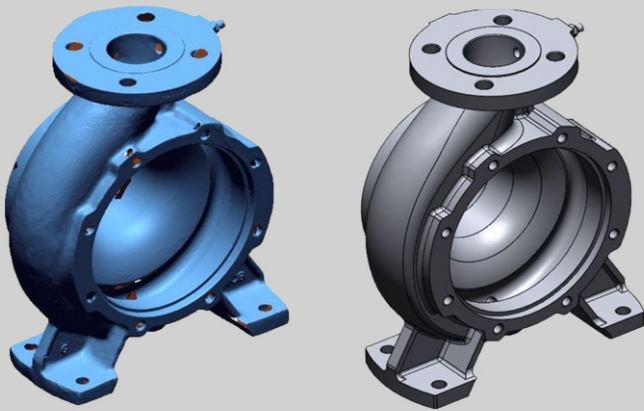
Under Ministry of MSME Government of India

ADMISSION OPEN

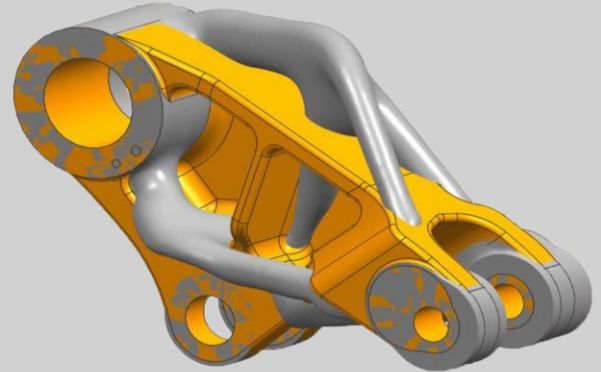
TRAINING ON REVERSE ENGINEERING

**Based on CAD/CAM Unigraphics- NX: Course covers on
Generating Cloud Data + Point Processing + Post
Processing + Triangulation + Segmentation +
Solid Modeling + Solid Model Export**

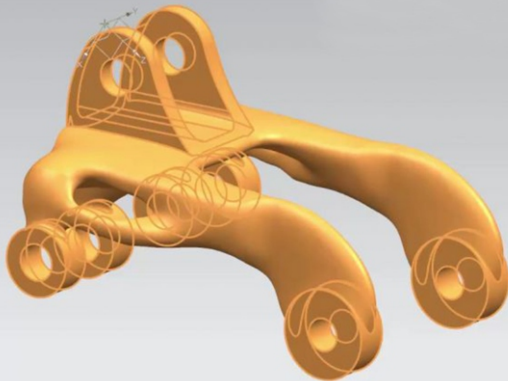
GENERATING CLOUD DATA



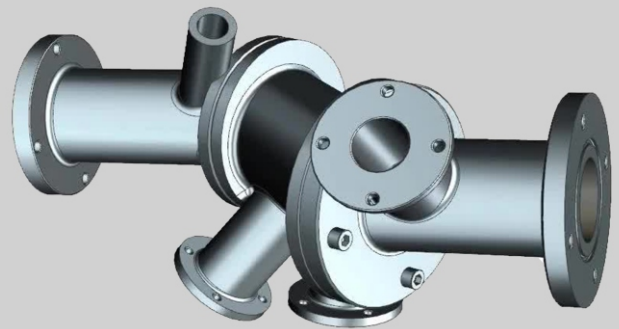
POINT PROCESSING



POST PROCESSING



SOLID MODELING



For more details please contact:-

Mob. No.: 9968924453, 9971925196

Tel: - 011-41009357, 011-26826801 (Ext.. 220 & 221)